

Instruction manual



Here is the basic instructions for working with Robo =Crisis=. There are also notes to situations. I ask you to take this very seriously with understanding

1. The robot consists of:

- Trading Robot - Robo =Crisis=
- Trading Session Indicators and Volatility Indicator

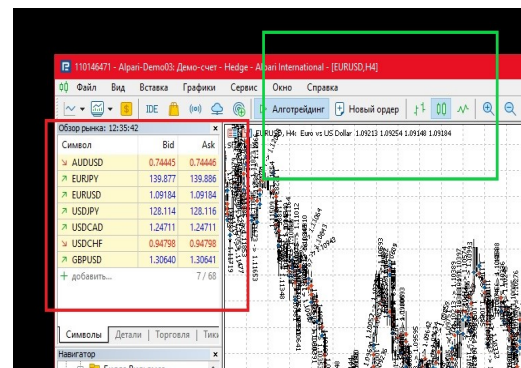
Note: The robot uses 2 unrelated indicators. Any failure, incorrect setting of these indicators will not affect the quality of the Robot's trading in any way

- Robo =Crisis= is installed in the folder - MQL5\Experts
- The Volatility indicator in the folder - MQL5\Indicators
- There is no need to install the Trading Session indicator

2. Features in the work of the Robot:

Note: Since the Robot worked for a long time and made a profit in manual mode, it was decided to make it semi-automatic. This will allow users to fully control the entire trading process

- The launch of the Robot is carried out absolutely on any chart
- 7 currency pairs are used in trading
- Only these 7 tools should be used in the data window



Very important note: The Robot works in real time, so no changes are allowed in the terminal and in the Robot itself at the time of its operation(You can not change the settings of the Robot, you can not change the terminal settings, in any case you can not close the terminal, you can not turn off the computer or device on which the Robot is running, the Internet must be stable) If any of the above cases occur, the Robot may not start working correctly. In this case, the Robot will have to be stopped and restarted

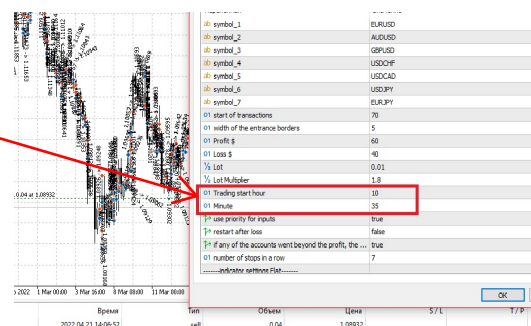
3. Getting started

- The initial recommended deposit is 5000 or more

Note: To open more than 2 transactions per day, use a deposit of 5000.

For 2 or less transactions, you can use a smaller deposit(Be sure to read the Trading Tips document)

- leverage from 1:500. The more, the better
- Start of trading - the beginning of the Asian session



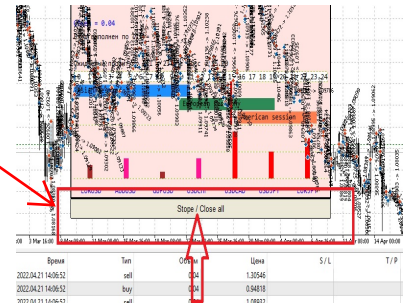
- Note: I always start the Robot at the beginning of a new half hour (01:05 or 01:35, 09:05 or 09:35 and so on) And during the whole day, except for the American session, these are the time parameters I specify in the Robot settings. I do not trade at the American session

- At the end of the trading day, the Robot must be stopped

Note: If the trading day is coming to an end and you have open trades, don't be afraid to close them.

It is better to start a new trading day with a larger lot than to transfer transactions to the next day

(It is also recommended to restart the terminal at the end of the trading day)

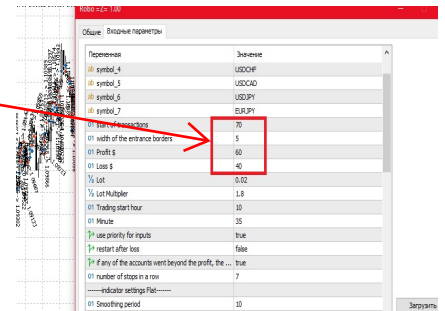


4. Settings and their features

1. Setting up market entry, profit and stop loss

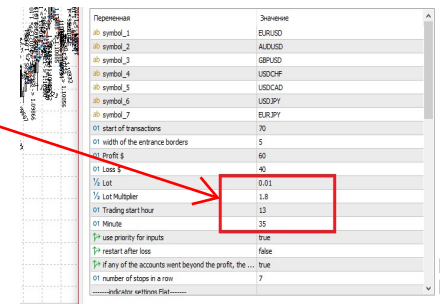
Note: The lower the parameters, the more actively the Robot will trade, respectively, and the risks are higher.

The higher the parameters, the more accurate the trading is, the risks are less (The robot was tested and showed stable results with exactly the settings specified in the Set)



2. Parameters for setting the Lot, the lot multiplier, the hour and minutes of the start of sales

Note: Set the lot parameters based on your money management. Don't take any chances if you have any doubts



3. Conditions for entering and exiting trades + parameter responsible for the number of Stops in a row

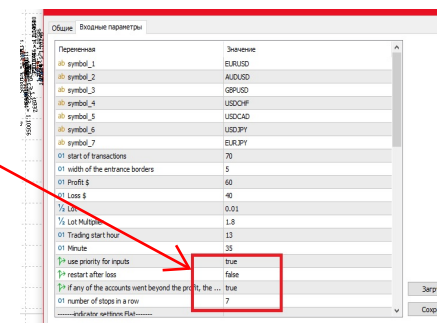
Note: These parameters are related to the parameters of item 1.

It depends on them how often the Robot will open and close deals based on certain conditions.

The number of stops in a row is 7 by default.

It is with these settings that the Robot achieves a stable profit.

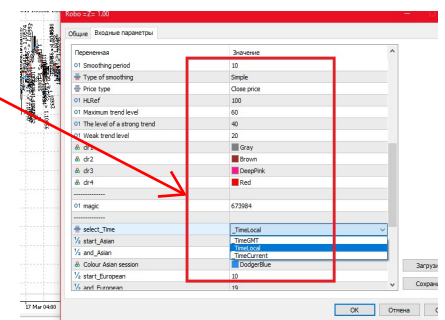
To work in the "scalping" mode, other settings are required, but be sure to take into account your money management and risks in such trading



4. General graphics settings + Session indicator time settings (Local, Current and GMT)

Note: Setting the indicators does not affect the Robot's operation.

If the data of hourly sessions differ in time from yours, do not pay attention to it



Important: The settings will be posted in the Set.

I strongly ask you to take into account all the items and settings of the robot by default

